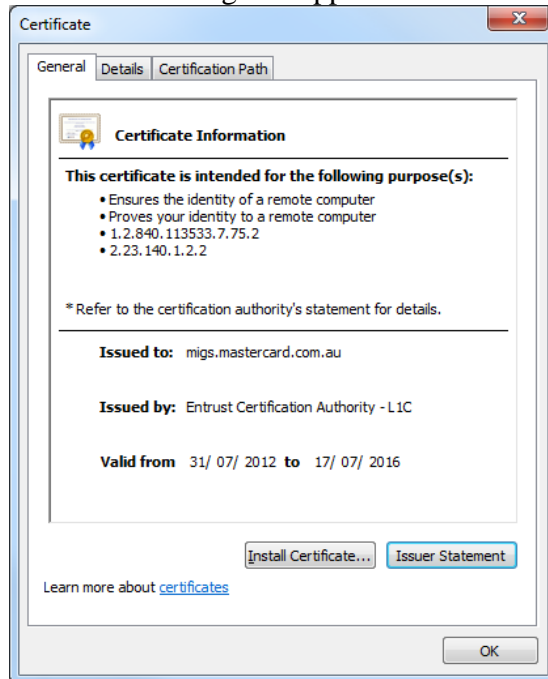
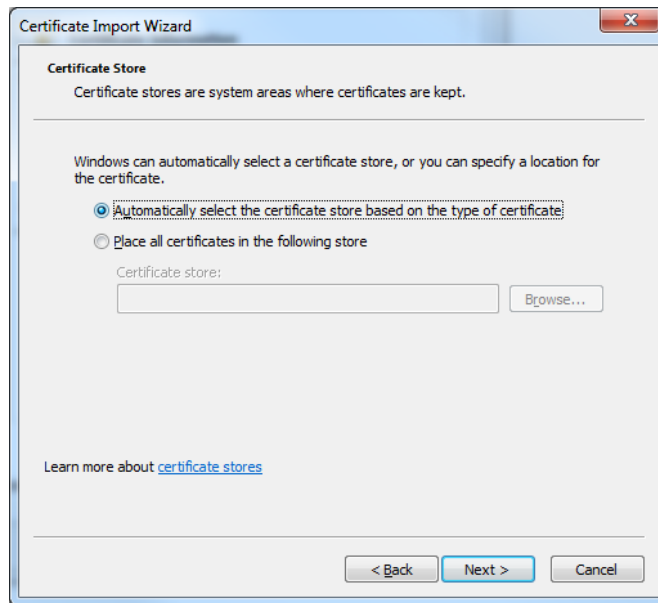


Install certificate on Microsoft IIS

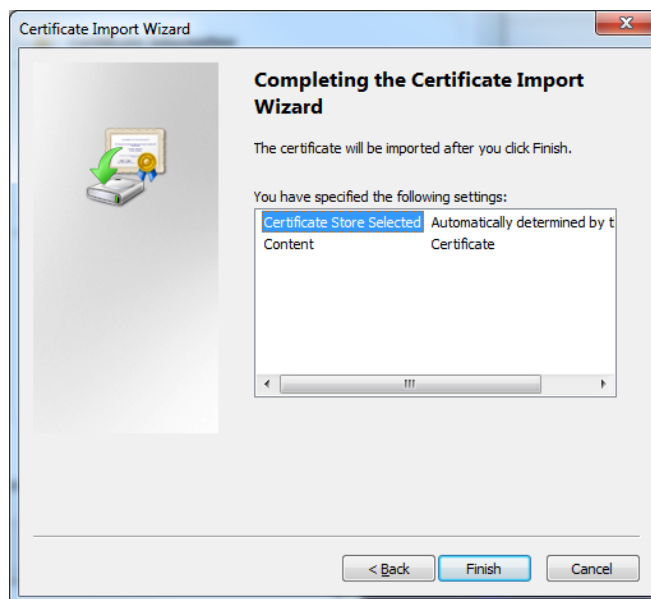
1. Download and save the certificate to your local server.
2. Locate the file saved in Step 1 and double-click it to view the certificate. The **Certificate** dialog box appears.



3. Under the General tab, click **Install Certificate**.
4. The Certificate Import Wizard appears. Click **Next**.
5. Select **Automatically select the certificate store based on the type of certificate** and click **Next**.



6. Click **Finish** to complete the Certificate Import Wizard.



7. A dialog box appears indicating the import was successful. Click **OK**.



* Above instruction is an example only and maybe varied depends on the web server environment.